

# Belmont Forum DELTAS CPC seminar

Southampton, 28 May 2015

Sylvia Szabo

credit: Ian Harrison, Efi Foufoula-Georgiou & Barbara Burkholder



# A global vision for sustainable deltas

- Deltas cover 1% of the Earth's area, are home to over half billion of people, and contain biodiverse ecosystems supplying critical goods and services around the world. Many important protected areas are within deltas.
- They are key contributors to agricultural production at the national and regional levels, and thus enable alleviation of global food insecurity risks.
- Deltas are under threat from a range of natural and anthropogenic activities. Globally >40% of river discharge and 26% of sediment are intercepted by large reservoirs.
- There is an urgent need for a better understanding of the physical, ecological and socio-economic characteristics of deltas as coupled socio-ecological systems.



# BF DELTAS Project consortium

BF-DELTAS Project Partner Countries

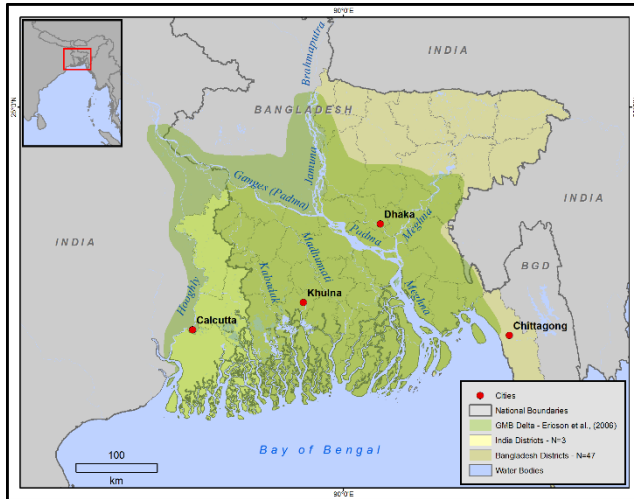


Lead: University of Minnesota

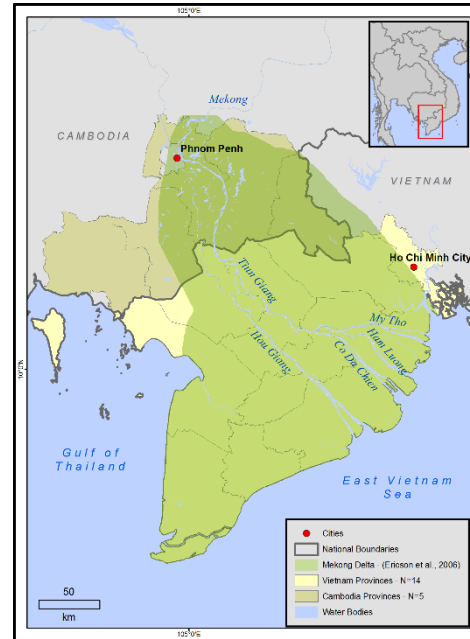
UK PI: Zoe Matthews

CIs: Robert J. Nicholls, John Dearing  
& Angela Baschieri

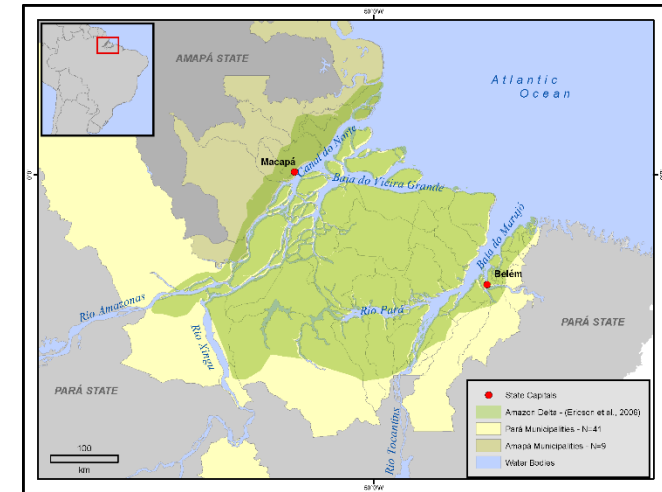
# Belmont Forum DELTAS study areas



Ganges Brahmaputra delta

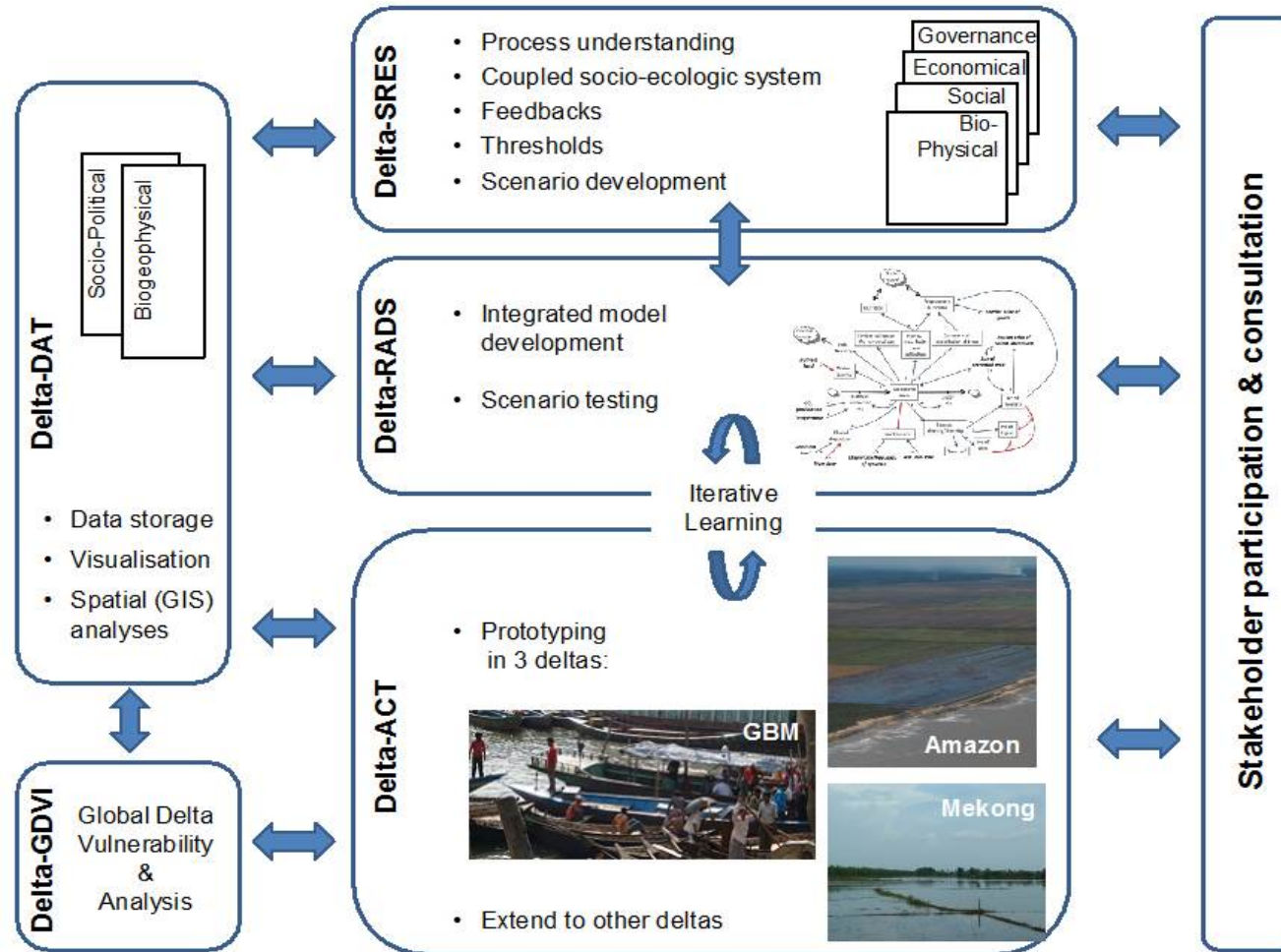


Mekong delta



Amazon delta

# BF DELTAS: Research framework and objectives





# Relevance to SDG agenda & engagement with SDG process

- Socio-economic development of delta regions crucial to global sustainable development (e.g. food security).
- Proposed SDGs offer new opportunities for delta regions (goals and indicators on climate change, food security, agricultural production, price volatility and ecosystem services, marine environments and fisheries).
- Editorial in *Environment: science and policy for sustainable development* (Szabo et al., forthcoming).
- HL event in NY on deltas and sustainable development coordinated by the UNU (Oct 2015).



The background image shows a rural village scene. In the foreground, there is a calm body of water, possibly a pond or a small lake, reflecting the sky. Behind the water, several traditional stilt houses are visible. These houses are built on wooden or concrete pillars, with their upper floors made of wood and their roofs covered in reddish-brown tiles. Some houses appear to be under construction, with visible wooden frames and scaffolding. The sky is filled with large, white, fluffy clouds, and the overall lighting is soft, suggesting an overcast day. The text 'Follows us on Twitter @ BFDELTAS' is centered in the middle of the image in a black, sans-serif font.

Follows us on Twitter @ BFDELTAS